

SPARTA TABLE LAMP

SKU:CAMORO-201-3033.1

WEIGHT

Net Weight: 9.35kg | 20.6 lbs

Gross Weight: 14kg | 30.9 lbs

BULBS

Quantity: 1

Type: E27

Wattage: 40W (max)

MATERIALS

Body: Brass

Details: Marble

PACKING (approx.)

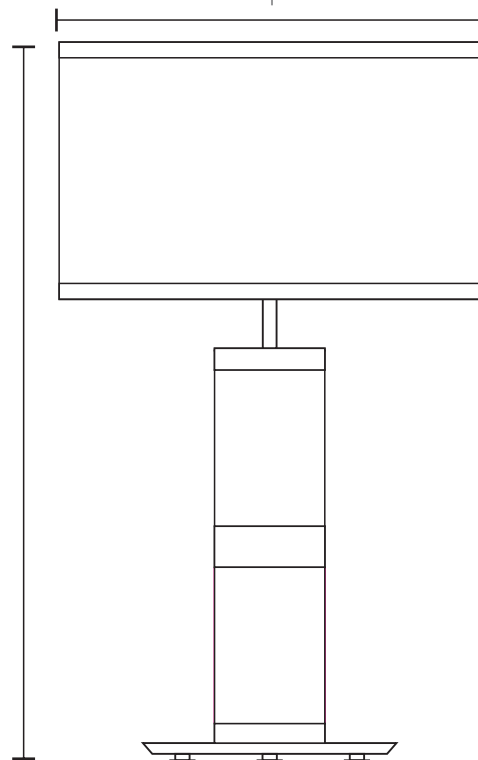
Dimensions: 36 x 36 x 57 cm

14.2 x 14.2 x 22.4. in

Volume: 0.07 m³ | 2.6 l ft³

HEIGHT
66 cm | 26 in

DIAMETER
40 cm | 15.7 in



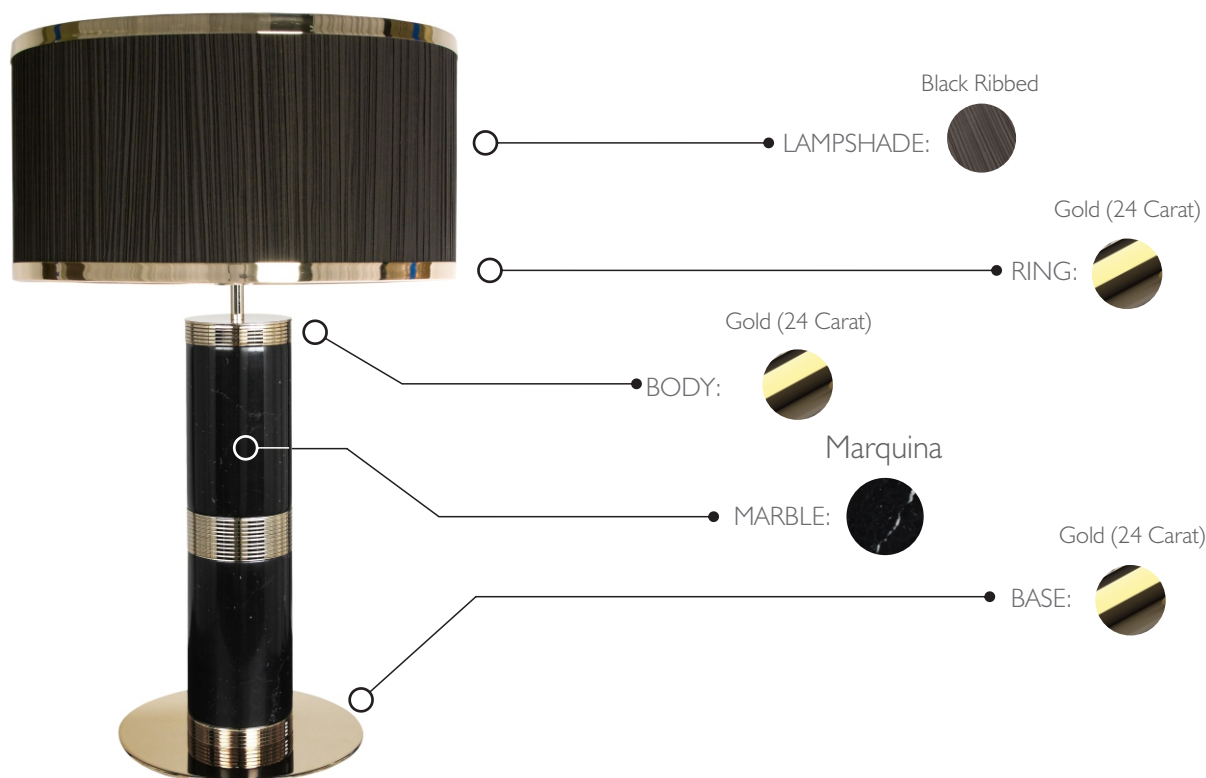
CE - Products manufactured according the European norm of security EN 60 598-1.

F - Products adjusted for installation in surfaces normally inflammable.

□ - Products of class II. The electric isolation is double or reinforced.

ES - Products with the possibility of instalation of low-energy consumption bulbs.

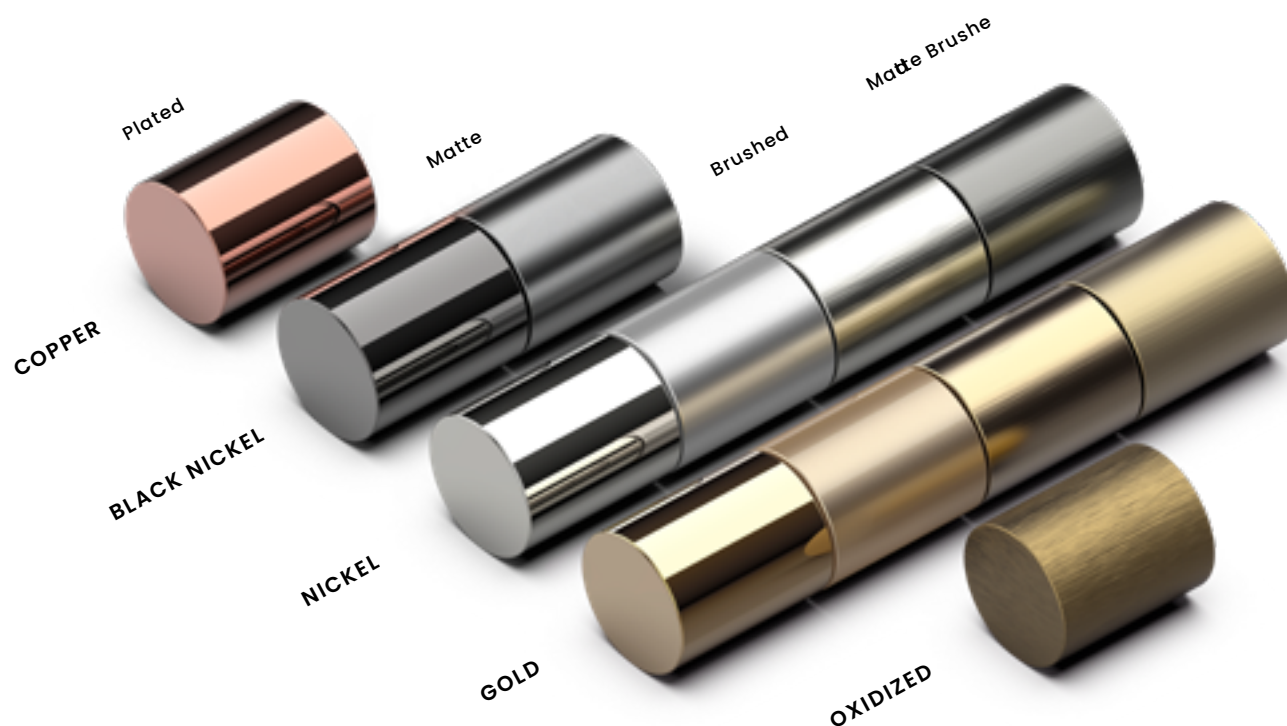
PRODUCT FINISHES & COSTUMIZATION OPTIONS



CUSTOMIZATION OPTIONS

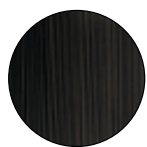
FINISHES

Metal Finishes



THE IMAGES USED IN THIS CATALOGUE ARE PURELY FIGURATIVE AND THE FINISHES OF THE PIECES MAY BE DIFFERENT.
THEREFORE, WE ENCOURAGE YOU TO CHECK IT WITH YOUR BUSINESS DEVELOPMENT MANAGER.

LAMPSHADE FABRIC options



BLACK RIBBED



SEAMS OF GREY



NUDE PEACH

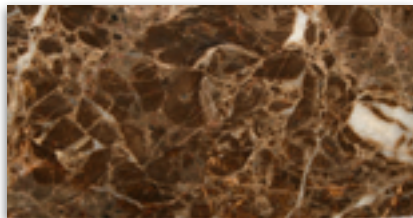


SYNTHETIC BROWN

CUSTOMIZATION OPTIONS

FINISHES

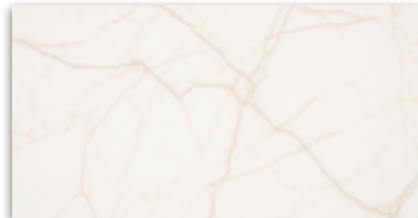
Marble Options



Emperador



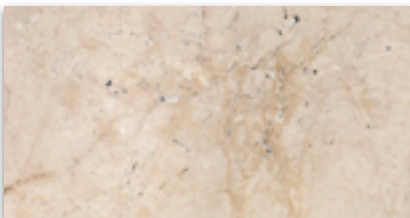
Marquina



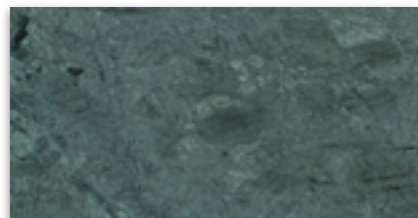
Estremoz



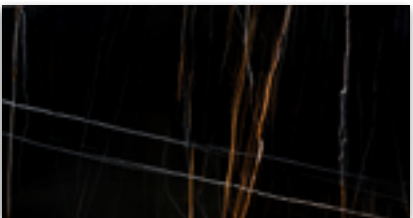
Carrara



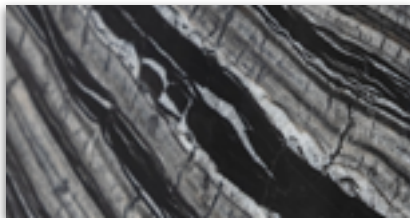
Travertino



Guatemala

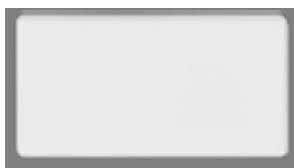


Sahara Noir*



Kenya Black

Lacquered MDF Colors



White Lacquered



Black Lacquered



Gold Lacquered